

Using the land ownership and tax payment records of John Overby, the father of Robert Overby 1784 – 1862, shows John to have a familial relationship with the Nicholas Overby descendants in Dinwiddie County. He is believed to be the son of Jerimiah Overby due to the close and ongoing relationship shown by existing property records. Nicholas Ye Younger Overby and his son Nicholas Overby owned many properties across the Northern portion of Dinwiddie County. Their descendants Jerimiah and James Overby continued to operate large farms and own numerous properties through the 1700s. Some of these same properties were co-owned by brothers James and Jerimiah and later co-owned by Jerimiah and John. At John's death in 1820 his remaining properties are divided among his sons, including Robert my 3<sup>rd</sup> Great-Grandfather. During the Civil War the Courthouse in Dinwiddie was destroyed along with many recorded deeds, marriages, etc. The following is gleaned from remaining records.

typ patent ref VPB

25 p320 dat 12 Jan

1746/47

to James Overby con

30 Shillings

re 300a Prince George/ on the lower side of Georges Branch of Nammissen Creek loc

-20425 -118402 F127 L0 P255

pt A) at Vaughan's Corner white Oak on the sd Branch

lthence along his Lines In E20N; 100P;

Vaughan pt B) his Corner Hickory thence In

S20E; 74P; pt C) a Corner Thence In

E29N; 242P;

pt D) a faced Corner thence In W23N;

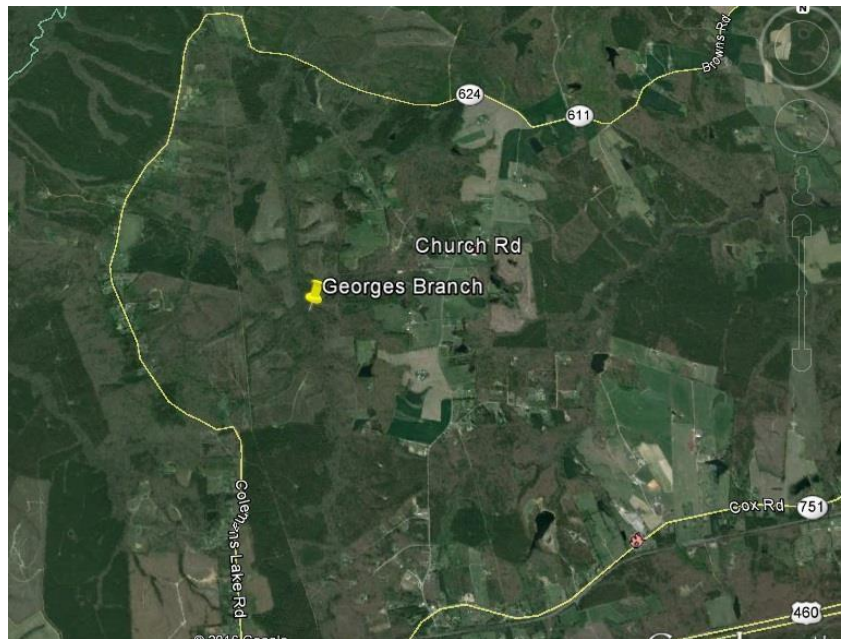
324P; pt E) a faced Corner thence In

W9S; 78P;

pt F) a Corner Gum on Georges Branch

lthence up the sd branch as it meanders

lto the Beginning Im ;; up George Br.



typ grant

ref CGB H p371

dat 16 Jun 1783

Georges Branch

drains to Namozine Creek which is the

border of to Jeremiah Overby Amelia

and Dinwiddie Counties. It is just off of US 460 and North of con A.C. 5 Shill. Sterl.

Ford, VA.

l11a by Survey bearing date 9 Apr 1776

re 11a Dinwiddie/ on the Head of Ocquits br. of Hatchers run loc

10377 -126327 F127 L0 P255

pt A) John Woods faced Corner in Overby's Chains Breadth

In S69W; 82P; James Davis fm C. in Overby's Chains Breadth

pt B) a faced Corner on the line of John Banister Esquire In

N18W; 44P; John Banister Esq.

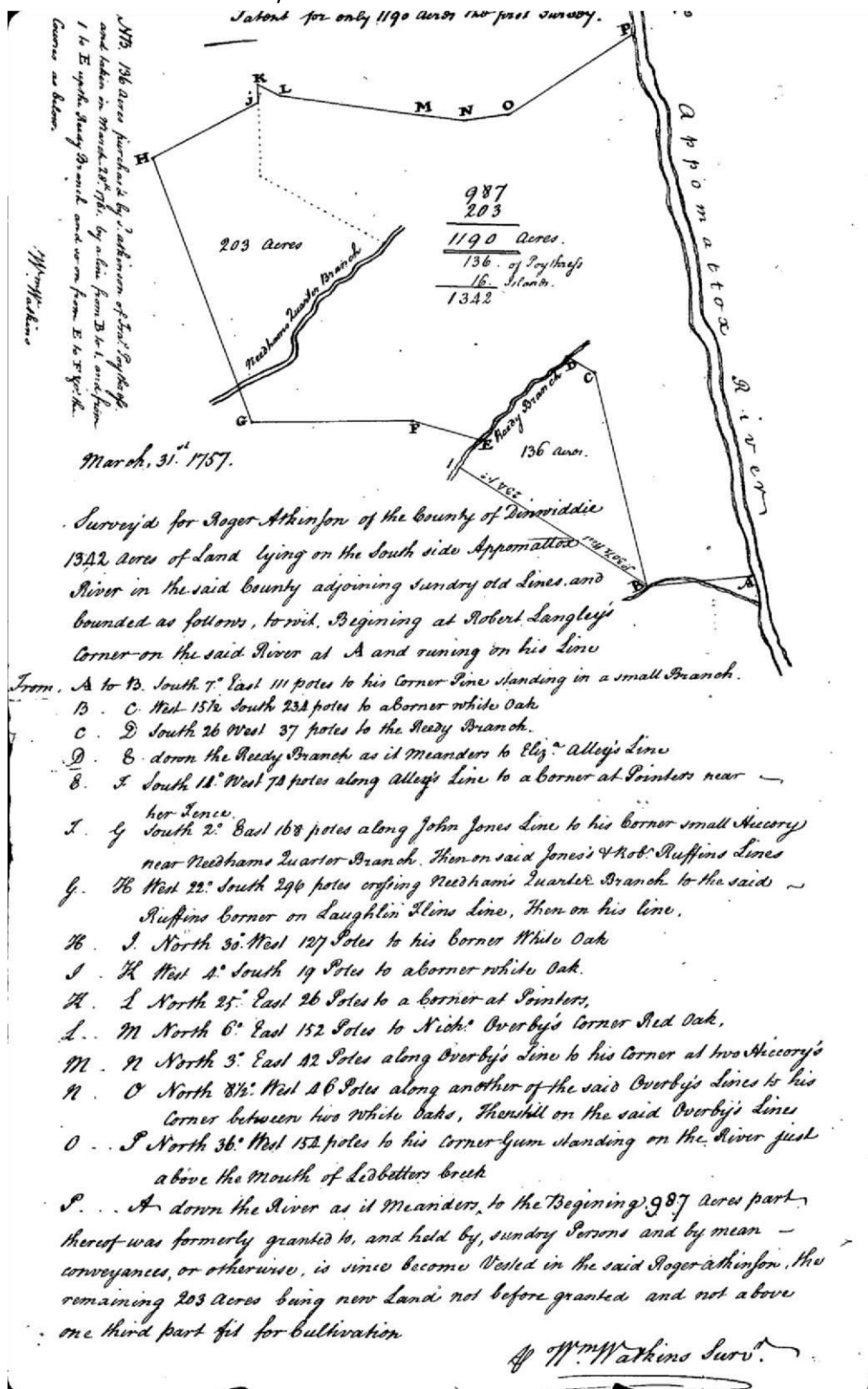
pt C) a Corner Lightwood Knot near a small branch

lthence on John Woods line formerly Robert Bollings lc

S82E; 94P; John Woods line formerly Robert Bollings

Nicholas Overby 1694 – 1740 owned land in Dinwiddie

Co. VA on the Appomattox River adjacent to Roger Atkinson. See Atkinson Survey below.



This land (Nicholas Overby) was taxed with payment by his sons, Jerimiah Overby, and James Overby on 378 acres until 1811, from 1795 till 1811 it is listed on tax rolls as Jerimiah Overby Estate. Prior to 1789 tax paid by Jerimiah Overby on 378 acres, In 1789 record states - Paid by John Overby on 378 acres (1/2 conveyed by James Overby and formerly charged Jerry Overby). 1790 - 1794 tax is charged to Jerimiah Overby and 1795 - 1811 Jerimiah Overby Estate is taxed on 378 acres.

The ½ interest in the 378 acres belonging to James, the brother of Jerimiah, is transferred to John who made the 1789 payment on the combined holding, as James was deceased in 1783.



In 1792, 39 acres is shown as an alteration in Roger Atkinson's tax bill, note: 39 ac taken off for Jerimiah Overby.

Alterations	Proprietors & Names	No. Acres	for
39 Taken off for Jerimiah Overby	(1) Adams George Esq	140	12
	Atkinson Roger	577	6
	Ditto Rogers	315	
	Ditto L. Jones	100	6

This 39 acres is shown as taxed in 1793 to John Overby. This leads to the conclusion that John is the son of Jerimiah who is given 39 acres or at least the purchase is arranged by Jerimiah for John.

John continues to pay the taxes on this property until 1810. In 1811 the Jerimiah Overby estate is no longer taxed and John is taxed on 150 acres. This 150 acres is assumed to include his part of the estate settlement of his father Jerimiah.

John also is conveyed land by Laban Epps, 15 acres on Cox Road (old US 460), taxed starting in 1818. This may be an indication that John's Wife Charlotte was maiden name Epps as John and Charlotte's son Robert named his oldest son William Epps Overby.

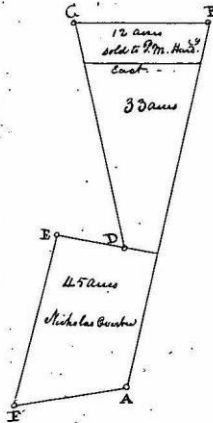
John Overby continues to pay tax on this land through 1819, in 1820 it has been divided to his sons, including Nicholas and Robert 1784 – 1862 (my 3<sup>rd</sup> Great-Grandfather).

Robert pays taxes on 30 acres on Georges Branch in Dinwiddie County from 1820 to 1824, when he obviously sold the 30 acres as he paid taxes on it no more. Robert was married in Chesterfield County in 1817 and the tax record for the 30 acres in Dinwiddie list his place of residence as Chesterfield.

Survey made for Nicholas, son of John, brother of Robert 1784 – 1862 is shown below.

Agreeably to the Request, and mutual Consent of Nicholas Overby and his Sister  
 I have surveyed a Tract or parcel of Land, lying in Dinwiddie  
 County, belonging to the Estate of Peter Overby dec'd, and have divided the same  
 between agreeably to the Will of said Decedent as specified in the annexed plat;  
 the outbounds boundaries of which are as follows Viz: Beginning at a corner  
 Stake in Joel Wells' Field aka, thence from

- A to B N. 12° E. 240 Poles to a corner in Southlands' line.
- B to C West -- 86 1/2 Poles to a corner in Hadsaway's line.
- C to D S. 15° E. 143 Poles to a corner.
- D to E N. 80° W. 44 Poles to a corner in Wells' line.
- E to F S. 10° W. 112 Poles to a corner.
- F to A N. 85° E. 74 Poles to the Beginning, containing  
 90 acres of which the annexed is a plat.



Magnetic Variation 2° 40' West

James Hargrave S. D. C.  
 Apr. 28. 1820.

Below is land transfer record reconstruction by Hughes

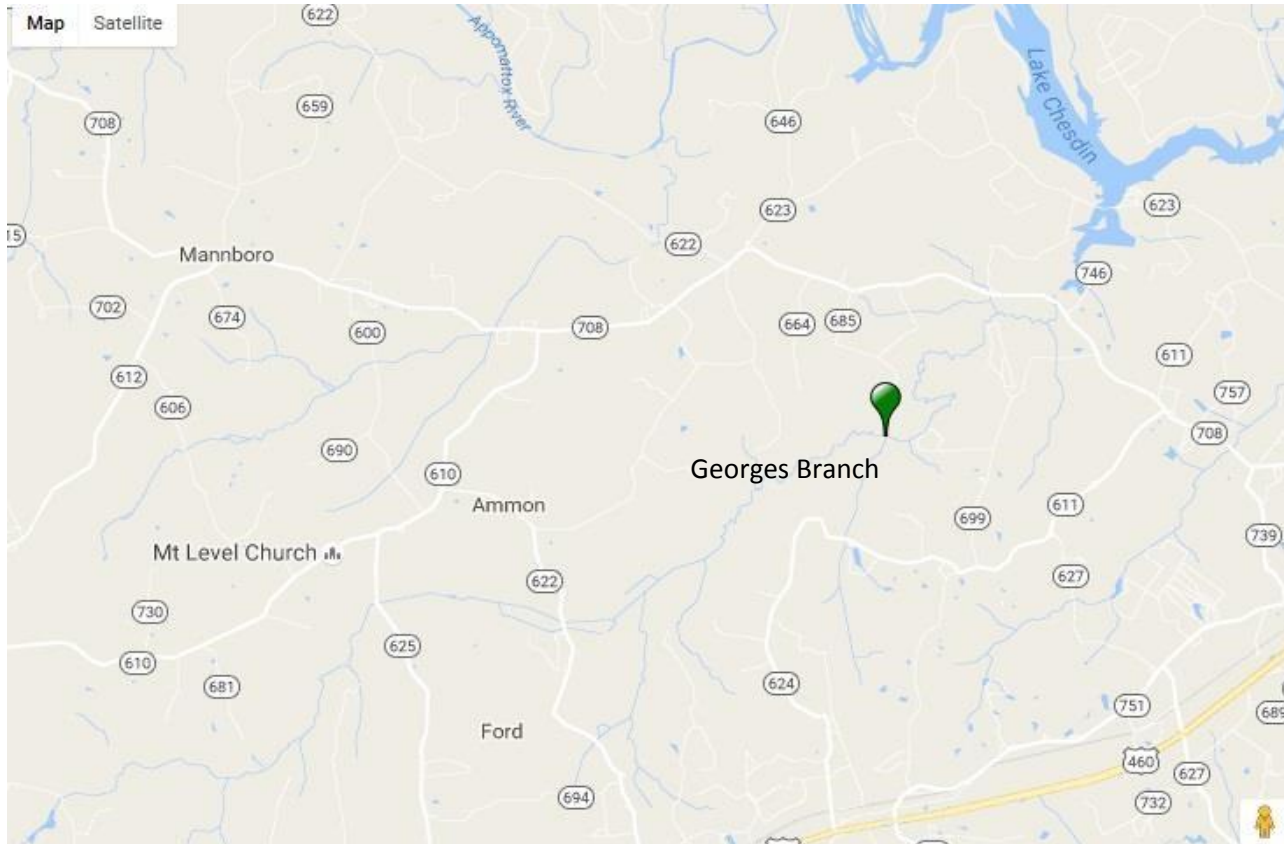


## Land Records 1752-1820

Compiled and Indexed  
 by Thomas P Hughes, Jr. and Jewel B Standefer

Electronically reformatted in 2014  
 by J. Barrett Chappell, Jr., Clerk

OVERBY, Robert - 1820 taxed on 30a on George's Br. 15 NW CH conv by John Overby, Sr.



**John Overby – Son of Jermiah Overby, Son of Nicholas Overby III, Son of Nicholas “Ye Younger” Overbey II, Son of Nicholas Overbey I, Son of Sir Giles Overbury, Son of Sir Nicholas Overby, Son of Yeoman Thomas Overbury, Son of Thomas Overbury.**

**Below is the information discovered to support the relationships:**

25. Nicholas Overby III-7 (Nicholas "Ye Younger" Overbey II-6, Nicholas Overbey I-5, Sir Giles Overbury-4, Sir Nicholas Overby-3, Yeoman Thomas Overbury-2, Thomas Overbury-1) [8]. He was born Abt. 1694. He died Abt. 1740.  
Jane ? [8]. She was born Abt. 1685.

Nicholas Overby III and Jane ?. They had 5 children. iii. 32. Jermiah Overby [7]. He was born Abt. 1725. He died 1795. Military Service in

American Rev. 4th VA Reg., Continental Line. <https://edavidarthur.tripod.com/Military/JeremiahOverby/>

Son - John Overby (Dinwiddie Co.) (b. ca 1753)

Son - Robert Overby (born Dinwiddie Co. ca.1784)

Married Mary (Polly) Spinner (Chesterfield Co. 1817)

Son - William Epps Overby (born Chesterfield Co. 1818)

-----  
From "Register Report of Thomas Overbury" jwbrown@edge.net Web Address;  
<http://jwbrown.home.edge.net>

**25. Nicholas Overby III-7 (Nicholas "Ye Younger" Overbey II-6, Nicholas Overbey I-5, Sir Giles Overbury-4, Sir Nicholas Overby-3, Yeoman Thomas Overbury-2, Thomas Overbury-1) [8]. He was born Abt. 1694. He died Abt. 1740.**

Jane ? [8]. She was born Abt. 1685.

Nicholas Overby III and Jane ?. They had 5 children.

i. Adam Overby [7, 1, 11]. He was born on 28 Jul 1722. He died 1780. ii.

James Overby [7, 1]. He was born on 05 Sep 1720. He died Abt. 1783.

**iii. 32. Jermiah Overby [7]. He was born Abt. 1725. He died 1795. Military Service in American Rev. 4th VA Reg., Continental Line. Jermiah Overby American Rev. iv.**

33. John Overby [7]. He was born Abt. 1725. He died Abt. 1783.

Jerimiah's brother John moved to Brunswick County, married Lydia, his family is well documented there. Brother Adam, moved to Mecklenburg County where his death was reported. There were other cousins in Dinwiddie in the 1700's including Anthony and Robert. Other descendants of Nicholas Overby (the first in America, the Immigrant) spread across VA and the country to NC, GA, AL, KY, IN, IL, etc.

Sons of Nicholas Overby, (the third of America):

Adam, James, **Jeremiah**, John

Hypothesis: Jeremiah is the father of "OVERBY (OVERBEE), John, Sr." listed below.

Supported by the fact that they are in the same community and there are land transfers among them, and they have joint ownership of property. The ages and normal childbearing years support this. The naming of his son "Nicholas" is supportive of this John being the grandson of Nicholas Overby III and Jane.

-----  
According to Dinwiddie Land Transfers Record "Data from Records 1752-1865

Compiled and Indexed by Thomas P Hughes, Jr."

**OVERBY, Jeremiah**

1788 - 1789 - James & **John Overby**

OVERBY, John

1791 - 1793 - William Allen & James Overby

**OVERBY (OVERBEE), John, Sr.** (John becomes Sr. when his son John becomes of legal age)

1801 - 1806 - sterling Overbee

1807 - Nicholas Overby

1809 John & Nicholas Overby

1810 son, John Overby

1811 sterling, Nicholas, John, Jr., & **Robert Overby**

1812 - 1813 - sons, Nicholas, John, Jr., & **Robert Overby**

-----  
"OVERBY (OVERBEE), John, Sr." father of:

Sterling, Nicholas, John, Jr. & **Robert**

This is most certainly the **Robert Overby** who's Blandford Cemetery Burial Record list parents as **John and Charlotte Overby** and list Birthplace: DINWIDDIE COUNTY VIRGINIA.

**Robert son of John and Charlotte** is the father of **William Epps Overby**, PVT Co. D 13th Reg 5th VA Calvary in Civil War.

**William Epps** is the Father of **David Overby** who is the father of **James W. Overby** who is the father of **Bertha M. Overby** (Arthur) my mother. by **David Arthur**.

-----  
William Epps Overby (born Chesterfield Co. 1818)

Son OF

Robert Overby (born Dinwiddie Co. ca.1784)

Son OF

John Overby (Dinwiddie Co.) (b. ca 1753)

Son OF

Jermiah Overby - He was born Abt. 1725. He died 1795. Military Service in American Rev. 4th VA Reg., Continental Line. <https://edavidarthur.tripod.com/Military/JeremiahOverby/>

Son OF

Nicholas Overby III - He died Abt. 1740.

Jane ? was born Abt. 1685. Nicholas Overby III and Jane ? had 5 children.

Son Of

Nicholas "Ye Younger" Overbey II - He was born Abt. 1659 in VA. He died Abt. 1739 in VA. Nicholas "Ye Younger" Overbey II and Jane ?. They had 7 children.

Son Of

Nicholas Overbey I - He was born on 04 Nov 1628 in Worchester County, England. He died Abt. 1691 in Prince George Co., VA. <https://edavidarthur.tripod.com/NicholasOverbyImmigrant.pdf>

Son Of

Sir Giles Overbury - He was born 1590 in Bourton on the Hill, Gloucester, England. He died 1653 in Bourton on the Hill, Gloucester, England. Burial in Bourton on the Hill.

<https://edavidarthur.tripod.com/LineToBoleyn.pdf> Family line to Anne Boleyn & Queen Elizabeth I

Knight of Roughton on the Hill on 1 December 1623 by James I

Son Of

Sir Nicholas Overbury - He was born 1547 in Aston Subedge, Gloucestershire, England. He died on 30 May 1643. Burial on 31 May 1643 in Bourton on the Hill, Gloucestershire, England.

[https://en.wikipedia.org/wiki/Nicholas\\_Overbury](https://en.wikipedia.org/wiki/Nicholas_Overbury)

Knighthood in 1621

Lady Mary Palmer is the daughter of Sir Giles Palmer and Merriall Feild . She was born Abt. 1550. She died 1617. Burial on 14 Jan 1617 in Bourton on the Hill, Gloucestershire England. Sir Nicholas Overby and Lady Mary Palmer were married Abt. 1578. They had 10 children.

<https://edavidarthur.tripod.com/UniversityEndowment.pdf> Edward Palmer brother of Mary Palmer

Son Of

Yeoman Thomas Overbury -He was born 1518 in Aston sub Edge, Gloucestershire, England. He died Jan 1580 in Aston sub Edge, Gloucestershire, England. Burial on 02 Feb 1580 in Churchyard at Aston-subEdge. <https://edavidarthur.tripod.com/Yeoman.pdf>

Isabelle Rutter is the daughter of Nicholas Rutter and Elizabeth ? . She was born 1522. She died Mar 1601. Burial on 15 Mar 1601 in Aston Subedge, Gloucester, England. Yeoman Thomas Overbury and Isabelle Rutter were married on 10 Feb 1549 in Aston Subedge, Gloucestershire, England. They had 6 children.

Son Of

Thomas Overbury - He was born 1485 in Aston-Subedge near Mickleton, England. He died 1544 in Aston Subedge, Gloucestershire, England. Burial on 06 Sep 1544 in Aston sub Edge, Gloucestershire, England.

Jone "Joan" Porter is the daughter of Sir Sgt of Arms William Porter and Margaret Giffard. She was born 1490 in Mickleton, Gloucestershire, England. Thomas Overbury and Jone "Joan" Porter had 20 children.

-----

The Overby Line from Jerimiah Overby born Abt. 1725 back to England is well documented in numerous publications including "The Overbury Story - 500 Years in England and America" by Libby Overby.

With the land records herein, it is certain that there is a familial relationship between Jerimiah Overby 1725-1795 and John Overby listed as his son. The evidence is circumstantial and not proof. John could have been the son of James, Jerimiah's brother; however, the continuation of family names is strong evidence of family lines. John named his sons Sterling, Nicholas, Robert, and John. Then Sterling the son of John named his son Jeremiah. Also, Jeremiah 1725-1795 had a twin brother named John who moved to Brunswick County and is well documented with his family there. All other relationships of the family line are well proven.

Also there are deeds to Nicholas Ye Younger Overby 1659 – 1739 (second Nicholas in America). These deeds show that he owned approximately 600 acres of properties which are now in the city of Petersburg.

<https://edavidarthur.tripod.com/NicholasYeYoungerDEEDs.pdf>